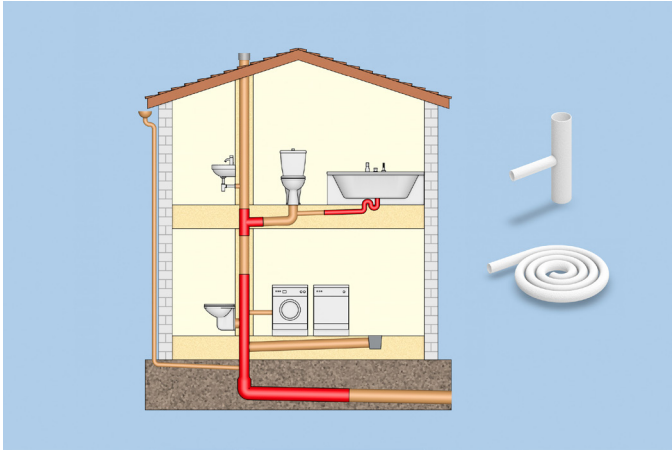


isoLINE® PL - for liners and T-shaped liners



Application area

Trenchless rehabilitation systems are an eco-friendly way to eliminate damage in sewer pipes inexpensively, quickly and permanently.

With the isoLINE® product range, Frenzelit has developed special textile materials for trenchless sewer rehabilitation which are installed by using inversion systems.

They are used mainly in the rehabilitation of damaged waste water, rainwater and collection pipes inside building structures.

Material profile

isoLINE® PL is based on knitted fabric made from 100% polyester yarns. The textile side is roughened and therefore guarantees high impregnant uptake. The outstanding features of the material are high chemical resistance in waste water conditions and good resin uptake. The PUR film used bonds firmly to the textile and facilitates fitting of the liner. It is air- and water-tight as well as chemically resistant.

The lines made from the material are highly flexible and therefore suitable for several 45° and 90° bends, have high radial and low longitudinal stretching properties and form tightly sealed flat seams. The impressive stretch properties of the composite material mean that dimension changes can be made.

Application engineering questions?

We're here to help you at insulation@frenzelit.com

Product characteristics

- Knitted fabric 100 % polyester plush
- Wall thickness about 3 mm
- Coating (outside) PUR film
- Color white
- Color coating transparent
- Coating thickness min. 0.6 mm
- Seam flat seam
- Seam material Polyester sewing thread + PUR sealing tape

In view of the variety of different installation and operation conditions and application and process engineering options, the information given in this prospectus can only provide approximate guidance.

Product range



isoLINE® PL liner

DN 30 – DN 400

Available lengths: 25, 50 and 100 mtr.

Other lengths can be produced on request.



isoLINE® PL T-shaped liner

Main pipe DN 75 – DN 400

Connector DN 50 – DN 250

Angle 45°, 90°

Further dimensions on request



isoLINE® PL head profile


Pipe DN 75 – DN 400


Angle 45°, 90°

Further dimensions on request

Certifications



 **Quality management**
IATF 16949; ISO 9001

 **Environment management**
ISO 14001

 **Occupational Health & Safety Management**
ISO 45001

 **Energy management**
ISO 50001

