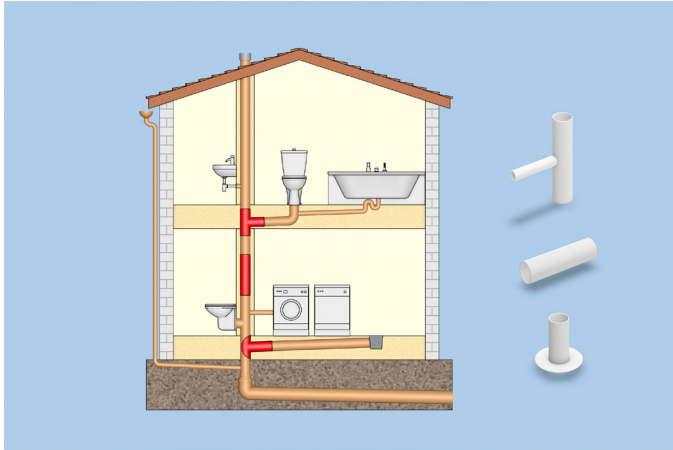


## isoLINE® HM - for liners, head profiles and T-liners



### Application area

Trenchless rehabilitation systems are an eco-friendly way to eliminate damage in sewer pipes inexpensively, quickly and permanently.

With the isoLINE® product range, Frenzelit has developed special textile materials for trenchless sewer rehabilitation which are installed by using inversion systems.

They are used mainly in the rehabilitation of damaged waste water, rainwater and collection pipes inside building structures.

### Material profile

isoLINE® HM is based on needlemat that is produced from a combination of glass fibres and polypropylene fibres. The outstanding features of the material are high chemical resistance in waste water conditions, good resin uptake and low compressibility. The PVC film used bonds firmly to the textile. It is air- and water-tight as well as chemically resistant.

isoLINE® HM is particularly suitable for use with epoxy resins and when exacting demands are made on stiffness in flexure.

### Application engineering questions?

We're here to help you at [insulation@frenzelit.com](mailto:insulation@frenzelit.com)

### Product characteristics

- Needlemat 30 % glass fibers / 70 % PP fibers
- Wall thickness about 4 mm
- Coating (inside) PVC film
- Temperature resistance for hot water curing
- Color needlemat white
- Color coating transparent
- Seam material PP sewing thread + PVC sealing tape

In view of the variety of different installation and operation conditions and application and process engineering options, the information given in this prospectus can only provide approximate guidance.

### Product range



#### isoLINE® HM short liner

Pipe DN 75 – DN 400  
Further dimensions on request  
Other lengths can be produced on request.  
Undersize as requested by the customer



#### isoLINE® HM T-liner

Main pipe DN 75 – DN 400  
Further dimensions on request  
Connector DN 50 – DN 250  
Angle 45°, 90°





#### isoLINE® HM head profile

Pipe DN 75 – DN 400  
Further dimensions on request  
Angle 45°, 90°  
Connector lengths 300, 400, 500 mm  
Brim with or without reinforcement

### Certifications



 **Quality management**  
IATF 16949; ISO 9001

 **Environment management**  
ISO 14001

 **Occupational Health & Safety Management**  
ISO 45001

 **Energy management**  
ISO 50001

